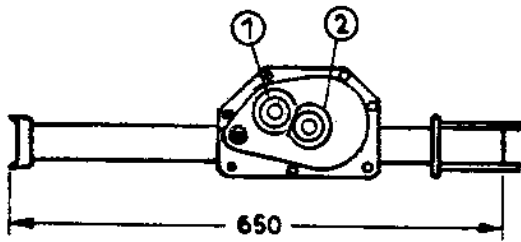
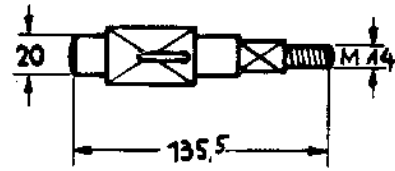
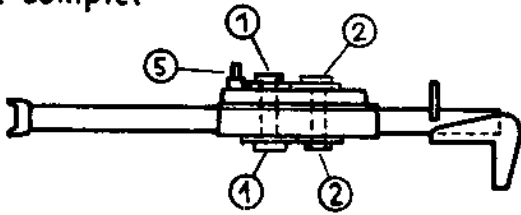


ROBOR

Stahlwinde 1,5 To. Tragkraft cric en acier 1,5 To. Force



Schaft kompl.
Fut complet



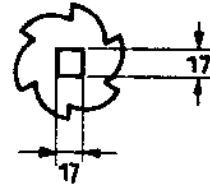
zu Normalkurve

Kurbel-Trieb
 $\phi = 22$
Engrenage de
la manivelle
normale

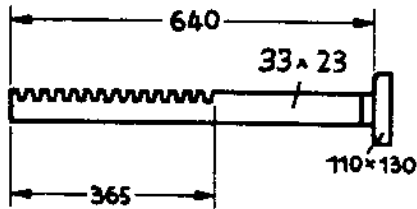
⑤



Versteller -
Bolzen
Axe du cliquet



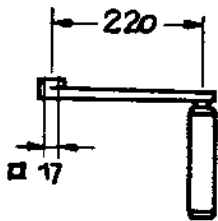
Sperrrad
Roue à rochet



Zahnstange
Cremailère
avec plaque
d'assise

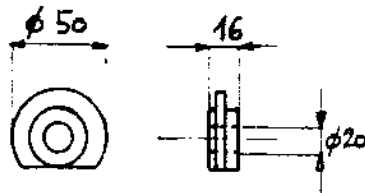


Sperrklinke
Cliquet

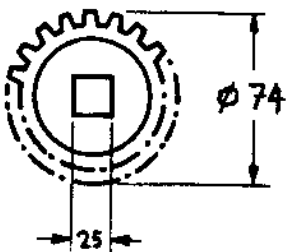


Kurbel
Manivelle

①

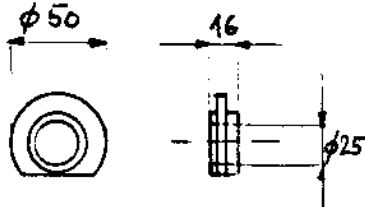


Lager
Douille ronde

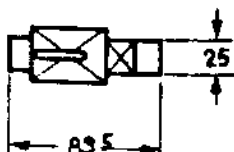


Zahnrad
16 Zähne
Roue dentée
16 dents

②



Lager
Douille ronde



Zahnstangen-Trieb
 $\phi = 28$
Engrenage de la
Cremailère